



QUICK START GUIDE

ECO LINE

SPÜLBOY® Nr.3

SPÜLBOY® Nr.3 portable

SPÜLBOY® Çay

**UNIQUE!
100% HYGIENIC
CLEAN GLASSES**



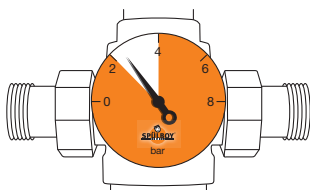
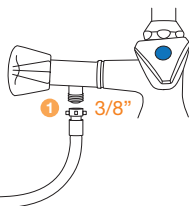
Schäfer Produkte GmbH
Simonshöfchen 53
42327 Wuppertal/Germany
Phone: +49 (0) 202 695 32-0
E-Mail: info@spuelboy.de

www.spuelboy.de

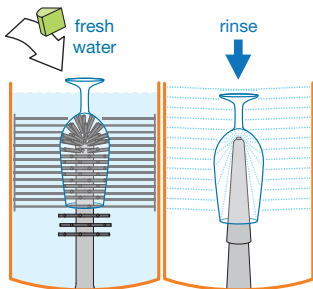




- 1** connect the device to the main water supply (3/8" or likewise)

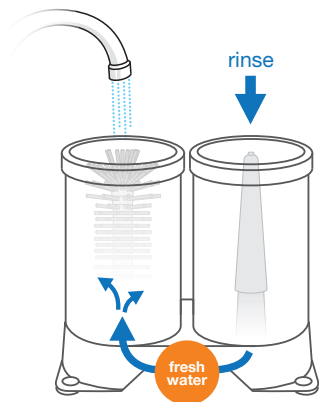


- 2** regulate the water pressure between 2 to max. 4 bar



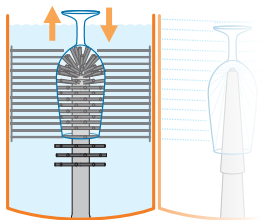
- 3** check the system
- fill in fresh water
 - fill in Classic SPÜLBOY[®] tab
 - check horizontal water flow
 - ready to use





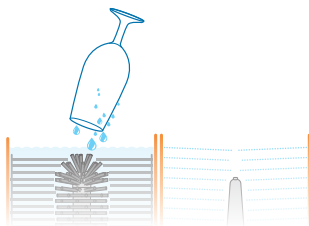
- 1 check and keep the cleanliness of the device and the work environment
- 2 fill the pre-sink with fresh water
- 3 place a quarter of a Classic SPÜLBOY® tablet into the pre-washing canister
- 4 renew the tab, if **during the rinsing (!)** no more foam forms (after appr. 6 hours)



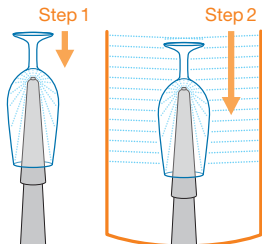


- 1 move the glass with steady up and down movements completely over the brush, at least **3-4 times**

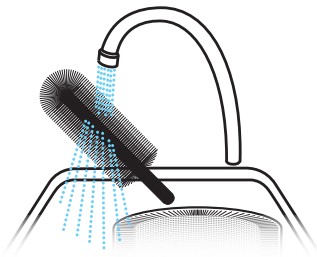
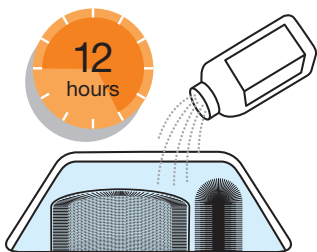
don't twist!



- 2 let the glass drain off briefly over the pre-washing canister




- 3 push down the 2 stage valve for at least **2-3 seconds**; rinse until the glass inside and outside is clearly cleaned



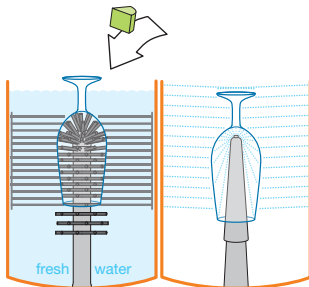
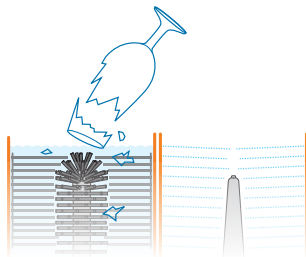
End of the day:

- 1 take off the brushes and place them with Classic brush sanitizer into a bucket/sink
- 2 fill up the sink with warm water and wait for appr. 12 hours
- 3 wipe off the device thoroughly with a clean sponge

In the morning:

- 1 rinsing brushes clean
 - 2 place the brushes back into the device
 - 3 fill-up with fresh water and new tab
- ready to use 

In case of glass damage:



- 1 stop the rinsing process immediately
- 2 take the device off the water pressure
- 3 let the water drain out of the pre-washing canister
- 4 **take off the brushes carefully and rinse them clean**
- 5 **carefully remove all broken glass**
- 6 place the brushes back into the device
- 7 check the system

